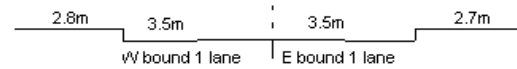


YEAR

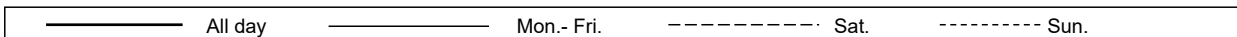
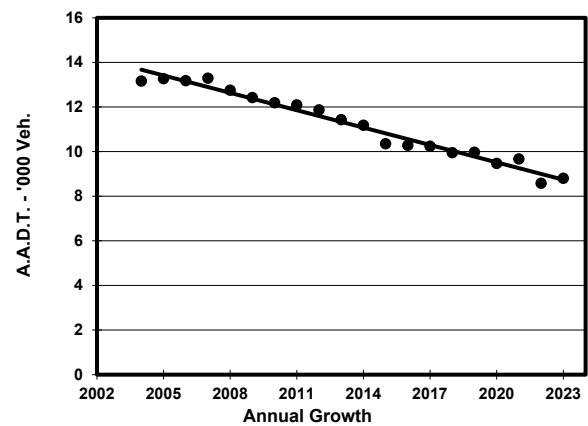
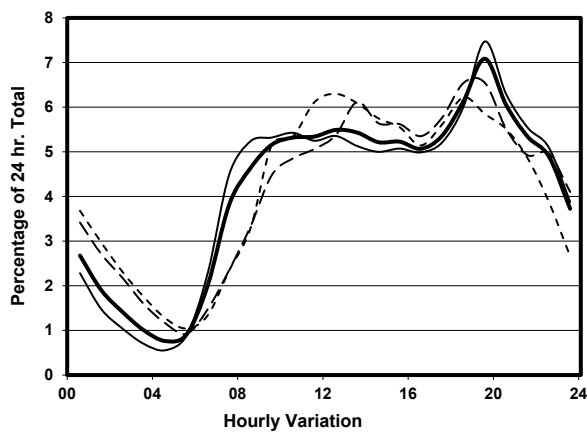
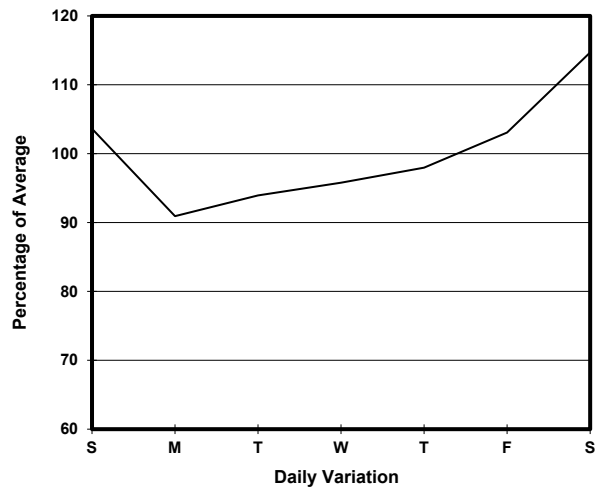
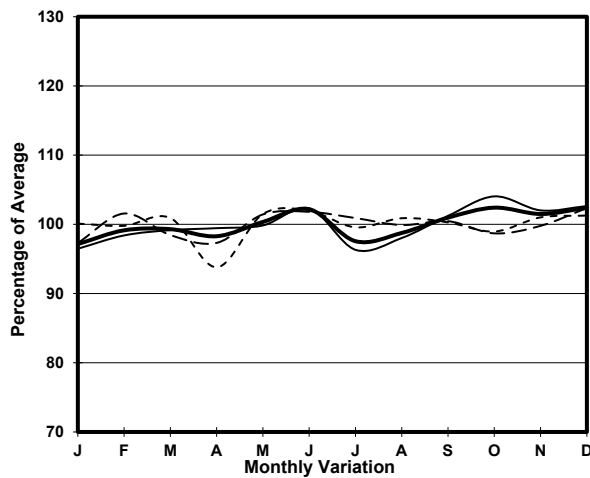
2023

LINK

CAINE RD (from SEYMOUR RD to ABERDEEN ST)

CORE STATION
ROAD NETWORK
ROAD TYPE1013
MAJOR
DISTRICT DISTRIBUTOR

1. TRAFFIC FLOW VARIATION AND GROWTH



2. TRAFFIC CHARACTERISTICS (BY DIRECTION)

Parameter	All - Day	Mon. - Fri.	Sat.	Sun.
EAST BOUND				
A.A.D.T.	6700	6680	7400	6010
R 12 / 24 - %	66	67.5	62.4	62.2
R 16 / 24 - %	86.4	88.1	82.4	81.5
AM Peak Hour	0900-1000	0900-1000	0900-1000	0900-1000
One-way flow at AM peak hour	380	400	390	280
T - % (AM)	-	-	-	-
PM Peak Hour	1800-1900	1800-1900	1800-1900	1800-1900
One-way flow at PM peak hour	440	440	460	380
T - % (PM)	-	-	-	-
Prop.of commercial vehicles - 16 hr.	-	-	-	-
WEST BOUND				
A.A.D.T.	2100	1790	2680	3050
R 12 / 24 - %	50.3	44	55.4	64.3
R 16 / 24 - %	83.3	82.5	82.6	86.1
AM Peak Hour	0700-0800	0700-0800	0900-1000	0900-1000
One-way flow at AM peak hour	80	90	60	190
T - % (AM)	-	-	-	-
PM Peak Hour	1800-1900	1800-1900	1800-1900	1800-1900
One-way flow at PM peak hour	100	70	200	190
T - % (PM)	-	-	-	-
Prop.of commercial vehicles - 16 hr.	-	-	-	-

3. OTHER INFORMATION AND COMMENT